

1 Rules

The regatta will be governed by the rules as defined in The Racing Rules of Sailing. As allowed by RRS 88.2, the US Sailing prescriptions to RRS 63.2 & 63.4 do not apply to this regatta. This changes the NOR.

2 Entries

- 2.1 Eligible yachts may be entered by completing registration with the organizing authority.
- 2.2 All yachts may use any sails legal under the rules of West Florida PHRF. Whisker poles shall be subject to the constraints of the rules of West Florida PHRF. A skipper in Cruiser Class must declare his intent to use his cruising chute rating no later than 1700, Tuesday, April 6, 2021.

3 Notices to Competitors

Announcements, notices, and race results will be posted on the official notice board(s) located at <https://www.yachtscoring.com/emenu.cfm?eID=4617>

4 Changes in Sailing Instructions

Any change in the sailing instructions will be posted before 0800 on the day it will take effect, except that any change in the schedule of races will be posted by 1900 on the day before it will take effect.

5 Signals Made Ashore

- 5.1 Signals made ashore will be displayed on the flagpole of the appropriate yacht club.
- 5.2 Code flag 'AP' with two sounds (one sound when lowered) means 'The race is postponed. The warning signal will be made not less than 60 minutes after 'AP' is lowered'. Generally, such postponement will be made prior to or at 0800.
- 5.3 All signals made ashore will be announced over VHF channel 63 immediately after display.

6 Schedule of Events

- 6.1 NO Registration – All will be done electronically through Yacht Scoring.
NO Skipper's Meeting – Any Questions please email us and we will respond back via email.
- 6.2 Two Races are scheduled.

Race..... Date, Time of 1st Warning Signal
#1 Saturday Davis Island to St. Petersburg.April 10....1100
#2 Sunday.....St. PetersburgApril 11....1100

7 Class Flags

Yellow PHRF Spinnaker
White PHRF Racer/Cruiser
Purple..... PHRF Non-Spinnaker & PHRF Cruising

8 Racing Area

The racing area is Tampa Bay. The starting areas will be:
Saturday Near DIYC "C"
Sunday Near G "3" Fl G 4s ESE of the St. Petersburg Pier

9 Marks & Courses**See Appendix B for Marks and Courses.**

Friday, Saturday, and Sunday the courses sailed will be point-to-point using government and private fixed marks as shown on the latest edition of NOAA charts #11416 & #11415. Such charts are located at :

<https://www.nauticalcharts.noaa.gov/RNOnline/rnconline.html>

This viewer shows lat/long information.

10 The Tampa Ship Channel

The Tampa Ship Channel is a major, high-traffic, shipping lane. No participant of this event is to impede the progress of any vessel restricted to this channel or any other channel in the sailing waters. If the Race Committee receives a report that any such vessel has been impeded by any competitor in this event, they may call a hearing to ascertain the facts and issue such penalty as is appropriate, including but not limited to, a time penalty or disqualification. This modifies RRS 60.2.

11 The Start

- 11.1 Races will be started in accordance with RRS 26 in the following order:
Yellow PHRF Spinnaker
White PHRF Racer/Cruiser
Purple PHRF Non-Spinnaker & PHRF Cruising
- 11.2 Should the wind conditions necessitate a postponement prior to the start, the R/C may move the starting area farther up the course by displaying code flag "L" and motoring towards the next mark. In this case, the starting mark will be either a mark of the course, a nearby government aid, or an inflatable buoy. Should the R/C pass a mark of the course, that mark is then eliminated from the course.
- 11.3 The starting line will be between a staff displaying an orange flag on the race committee boat and the starting mark.
- 11.4 Yachts whose preparatory signal has not been made shall keep clear of the starting area and of all yachts whose preparatory signal has been made.
- 11.5 The starting area is defined as an area extending ½ the length of the starting line behind it, in front of it, and at both ends.
- 11.6 Clearance marks may be set off the stern of the race committee boat. Yachts shall neither touch nor pass between those marks and the race committee boat.

12 Recalls

- 12.1 Individual recalls will be signaled in accordance with RRS 29.1. The Race Committee will endeavor to announce recalls on VHF Channel 63 but failure to make or receive such transmission shall not be grounds for redress. A premature starter who fails to return shall have 30 minutes added to her finish time. This modifies RRS A4.2.
- 12.2 If the race committee signals a general recall, the division that has been recalled shall start AFTER all other divisions have started. If more than one division has a general recall, then each recalled division shall restart in their respective starting position AFTER all other divisions have started. This changes RRS 29.2.

13 Change of Course after the Start

Except for shortening the course, there will be no change of course after the start.

14 The Finish

- 14.1 The finishing line will be between a staff displaying an Blue flag on a race committee boat and the finishing mark.
- 14.2 If the Race Committee is not on station, the US Sailing Prescription to RRS 34 shall apply. Skippers taking their own time shall deliver a signed note of their finishing time to the Race Committee immediately upon docking. Such finishing times will be posted as soon as possible. Such posting will constitute the beginning of the time limit allowed for redress under RRS 62.2 for that boat.

15 Alternative Penalties

Only the scoring penalty, RRS 44.3, will apply.

16 Protests

- 16.1 A yacht intending to protest SHALL REPORT IMMEDIATELY AFTER FINISHING TO A MEMBER OF THE RACE COMMITTEE on the far side of the committee boat from the finish line, clearly identifying the infringing yacht and await acknowledgment. This changes RRS 61.
- 16.2 A yacht acknowledging an infringement and having complied with RRS 44.3, shall report in the same manner as in 16.1 above clearly identifying the yacht infringed against and await acknowledgment.
- 16.3 Protests shall be written on forms available from the Race Committee and lodged with the Race Committee at the committee boat within one hour after the time of the docking of the Race Committee boat; except on Sunday the protest may be filed on the water within one hour of the protesting boat's finish.
- 16.4 On Saturday all protests filed will be posted on the Official Notice Board within one-half hour of the protest deadline. On Sunday, the parties to the protest will be notified via email or telephone.
- 16.5 We will attempt to hear protests on Saturday right after the Protest time limit. Any unresolved & protest on Sunday will

heard as soon as possible

17 Scoring

- 17.1 The low point scoring system, Appendix A of the racing rules, will apply, with three races scheduled for all classes, except that each yacht's total score will be the sum of her scores for all races. One race shall be completed to constitute a series.
- 17.2 Corrected times will be calculated by the PHRF time-on-distance method.

18 Haul-out Restrictions

After her starting signal on the first day of racing, no yacht shall be hauled out of the water without the written permission of the Race Officer or the Regatta Chairman.

19 Prizes

- 19.1 Prizes will be awarded to the top three finishers in each division.
- 19.2 The Bonanni Trophy shall be awarded to the overall winner of the PHRF Spinnaker Class.

20 Retiring Yachts

Retiring yachts are requested to inform the Race Committee as soon as possible. VHF Channel 63 will always be available for such communications.

21 Courtesy Announcements

Courtesy announcements of such things as postponements, premature starters, protest deadlines, and other signal displays and notice postings may be announced over VHF channel 63. Such announcements will be strictly a courtesy and used as a means to call attention to the proper notice or display. The failure or inability to receive or the failure to transmit such announcements shall not be grounds for redress.

22 Disclaimer of Liability

Competitors participate in the regatta entirely at their own risk. See rule 3, Decision to Race. The organizing authority will not accept any liability for material damage or personal injury or death sustained in conjunction with or prior to, during, or after the regatta.

Appendix B - Marks & Courses

Mark	Chart Description	Location or Description
"70"	Fl R 4s 16 ft 5M "70"	Mid-bay marker north of Manatee River
25' Priv	Big Bend Channel West Range Front Marker Q R 25ft Priv aids	Southern end Hillsborough Bay <i>See Appendix A above.</i>
4G	R "4G" Fl R 2.5s	Cut G South of MacDill AFB
Big B	Cut "B" Range Iso 6s 57ft	Back marker Cut B Range, east of Pinellas Point
Big J	Iso 6s 50ft Fl 4s 5M "A" Fl 4s 5M "B"	Back marker Cut "J" Range Tampa Bay
DIYC C	C "C" Priv	Yellow buoy 0.15nm west of G "25", cut C, Hillsborough Bay
G3	G "3" Fl G 4s	Buoy E of Whitted Airport
Little J	Q 10ft Fl 4s 5M	Front marker Cut "J" Range Tampa Bay
Manatee 2	Fl R 2.5s 16ft 5M "2"	Entrance Manatee River
Pinellas 1	Fl G 2.5s 16 ft 4M "1"	Entrance to the North-south Intracoastal Waterway SE of Point Pinellas.
Skyway	Sunshine Skyway Center <u>Three</u> Spans	Extremely large bridge at entrance to Tampa Bay,
SW 3	G "3" Q G BELL	Southwest Channel buoy #3 east of south end of Egmont Key

1 Saturday, April 10, 2021, Race #1, Davis Island to St Petersburg

There will be two possible courses for each class; the course to be sailed will be designated by displaying "A" or "B" on a placard on the stern of the RC boat with the warning signal.

1.1 **PHRF Spinnaker & Racer/Cruiser Course "A" (21.3 miles)**

1.1.1 START:between the R/C boat and DIYC-C.
From this point to the next mark, pass to the west of all buoys on Cut "C", Hillsborough Bay.
Also from this point on, be aware of the restricted zone surrounding MacDill Air Force Base. Intrusion into this area carries severe penalties.

1.1.2 25' Priv..... round leaving to STARBOARD
Note that this next leg passes just south of a green day mark labeled "3WR" that marks a dangerous wreck.

1.1.3 4G round leaving to PORT

1.1.4 Big B..... round leaving to STARBOARD

1.1.5 Little J..... round leaving to PORT

1.1.6 Big J round leaving to STARBOARD

1.1.7 FINISH between a committee boat and G3

1.2 **PHRF Non-spinnaker & PHRF Cruising Course "A": (15.5 miles)**

1.2.1 START:between the R/C boat and DIYC-C.
From this point to the next mark, pass to the west of all buoys on Cut "C", Hillsborough Bay.
Also from this point on, be aware of the restricted zone surrounding MacDill Air Force Base. Intrusion into this area carries severe penalties.

1.2.2 25' Priv..... round leaving to STARBOARD
Note that this next leg passes just south of a green day mark labeled "3WR" that marks a dangerous wreck.

1.2.3 4G round leaving to PORT

1.2.4 Big J.....pass leaving to STARBOARD

1.2.5 Little J..... round leaving to PORT

1.2.6 Big J round leaving to STARBOARD

1.2.7 FINISH between a committee boat and G3

1.3 **PHRF Spinnaker & Racer/Cruiser Course "B" (15.5 miles)**

1.3.1 START:between the R/C boat and DIYC-C.
From this point to the next mark, pass to the west of all buoys on Cut "C", Hillsborough Bay. Also from this point on, be aware of the restricted zone surrounding MacDill Air Force Base. Intrusion into this area carries severe penalties.

1.3.2 25' Priv..... round leaving to STARBOARD
Note that this next leg passes just south of a green day mark labeled "3WR" that marks a dangerous wreck.

1.3.3 4G round leaving to PORT

1.3.4 Big J.....pass leaving to STARBOARD

1.3.5 Little J..... round leaving to PORT

1.3.6 Big J round leaving to STARBOARD

1.3.7 FINISH between a committee boat and G3

1.4 **PHRF Non-spinnaker & PHRF Cruising Course "B" (13.8 miles)**

1.4.1 START:between the R/C boat and DIYC-C.
From this point to the next mark, pass to the west of all buoys on Cut "C", Hillsborough Bay.
Also from this point on, be aware of the restricted zone surrounding MacDill Air Force Base. Intrusion into this area carries severe penalties.

1.4.2 25' Priv..... round leaving to STARBOARD
Note that this next leg passes just south of a green day mark labeled "3WR" that marks a dangerous wreck.

1.4.3 4G round leaving to PORT

1.4.4 Big J round leaving to STARBOARD

1.4.5 FINISH between a committee boat and G3

2 Sunday, April 11, 2021, See attachments for Course Numbers, Marks, Descriptions and lat/longs below.

Suncoast Raceweek 2021 Attachment

APPENDIX D - MARKS and COURSES

The Starting Line will be in the vicinity of Marks "D/E".

The Finish line will at the Bayboro Harbor Entrance mark described as: FL (2+1) G6S 16ft 5M "S"

All mark positions and distances are approximate. See latest NOAA and Notice to Mariners for exact locations.

MARKS

Mark "D"	G "3" Fl G 4s	1nm ESE of SPYC harbor entrance	27 46.0N	82 36.5W
Mark "E"	G "1" QG	1.2nm ENE of SPYC harbor entrance	27 46.8N	82 36.1W
Mark "F"	Q 10 ft Q5M	Front Range Cut J Channel	27 45.9N	82 34.3W
Mark "J"	G "3G" Fl G 2.5s	Cut G Channel	27 47.1N	82 32.5W
Mark "K"	Iso 6s 52ft Fl 4s 20ft 5m	Back Range Cut E Channel	27 46.3N	82 31.0W
Mark "P"	Iso 6s 50ft Fl 4s 5m "A" "B"	Back Range Cut J Channel	27 45.0N	82 34.3W
Mark "R"	Fl G4s 16ft 5M"9"	Pinellas Channel	27 43.9N	82 36.6W
Mark "T"	Q 18 ft	Front Range Cut B Channel	27 41.3N	82 34.7W
Mark "U"	QR 27 ft	Lower Range Cut C Channel	27 40.2N	82 36.3W

<u>COURSE</u>	<u>MARKS TO BE ROUNDED</u>	<u>SIDE TO BE ROUNDED ON</u>	<u>APPROX. DISTANCE</u>
#1	START-J-E-P-FINISH	PORT Except: P round to starboard	10.2NM
#2	START-K-E-P-FINISHES	PORT Except: P round to starboard	12.4NM
#3	START-F-K-E-P-FINISHES	PORT Except: P round to starboard	11.9NM
#4	START-F-K-E-P-K-FINISH	PORT	17.2NM
#5	START-F-K-E-T-P-FINISH	PORT	21.4NM
#6	START-F-J-E-T-FINISH	PORT	15.3NM
#7	START-F-K-T-R-FINISH	STDB	14.5NM
#8	START-F-K-R-FINISH	STDB	10.9NM
#9	START-F-T-R-FINISH	STDB	11.4NM
#10	START-F-T-U-R-FINISH	STDB	14.1NM
#11	START-K-T-U-FINISH	STDB	15.9NM
#12	START-F-P-T-U-D-F-FINISH	STDB	18.5NM
#13	START-F-P-T-U-D-F-D-F-FINISH	STDB	21.9NM
#14	START-K-T-U-D-F-FINISH	STDB	22.5NM
#15	START-F-P-T-U-R-P-R-FINISH	STDB	18.8NM
#16	START-K-T-U-R-P-R-FINISH	STDB	23.2NM

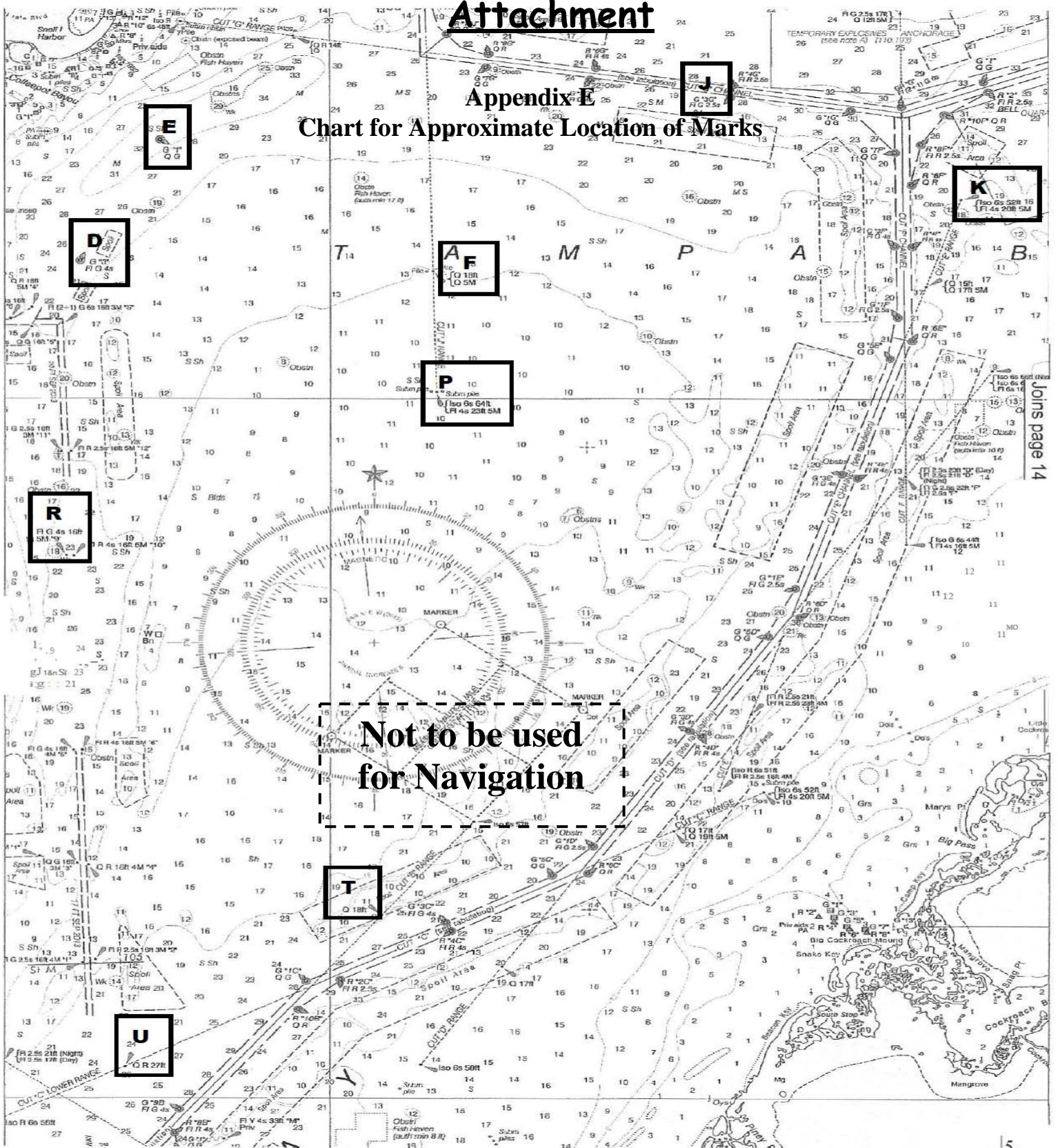
See approximate mark locations on Chart below

Suncoast Raceweek 2021

Attachment

Appendix E

Chart for Approximate Location of Marks



Joins page 14